

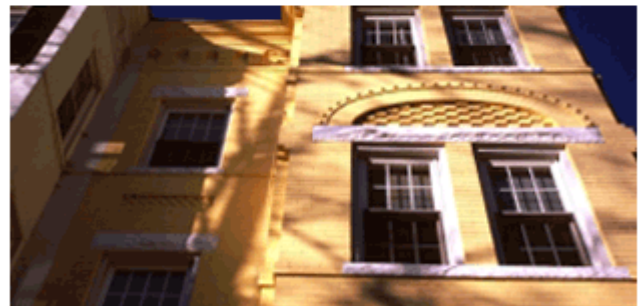


THE DEAL SHEET

Lease Transactions

Verizon Data Services expanded its lease by 6k SF to a total **27k SF** and extended its lease for an additional **36** months in Gateway II at 2901 Gateway Drive. **Mickey Meyer-Sturgis** repped the landlord, Richland Investments. JLL's **Andy Leatherman** repped the tenant.

Building value in
commercial real estate.



**Reznick
Group**

ACCOUNTING • TAX • BUSINESS ADVISORY

www.reznickgroup.com

CONTACT [EDITORIAL](#)

CONTACT [ADVERTISING](#)

CONTACT [GENERAL INFO](#)

This newsletter is a journalistic news source which accepts no payment for featured interviews. It is supported by conventional advertisers clearly identified in the right hand column. You have been selected to receive it either through prior contact or professional association. If you have received it in error, please accept our apologies and unsubscribe at bottom of the newsletter. ? 2009, Bisnow on Business, Inc., 1323 Connecticut Avenue, NW Washington, DC 20036. All rights reserved.

[Subscribe](#)